

NPAFC

Doc.212

Rev.

**Outline of Oceanographic Conditions  
in the Northwestern Pacific  
during the Summer of 1996**

by

**Kyohei Segawa**

**National Research Institute of Far Seas Fisheries,  
Fisheries Agency of Japan  
5-7-1 Orido, Shimizu, Shizuoka 424, Japan**

**Submitted to the  
NORTH PACIFIC ANADROMOUS FISH COMMISSION  
by  
Japan  
October 1996**

**THIS PAPER MAY BE CITED IN THE FOLLOWING MANNER:**

**Kyohei Segawa. 1996. Outline of oceanographic conditions in the  
Northwestern Pacific during the summer of 1996. (NPAFC Doc. 212).  
National Research Institute of Far Seas Fisheries. 5-7-1 Orido, Shimizu,  
Shizuoka, 424, Japan. 5p.**

# Outline of Oceanographic Conditions in the Northwestern Pacific during the Summer of 1996

Kyohei Segawa

National Research Institute of Far Seas Fisheries

## ABSTRACT

Oceanographic conditions in the Northwestern Pacific during the summer of 1996 are described using data obtained by salmon research vessels. Judging from temperature and salinity sections, the extent of Western Subarctic Water was slightly weaker than that of 1995. SST anomalies showed positive in north of 45°N, negative in south of 45°N.

## INTRODUCTION

Oceanographic conditions in the Northwestern Pacific during the summer of 1996 are described using temperature and salinity data obtained by salmon vessels. Extent of the Western Subarctic Water (WSW) and sea surface temperature (SST), which characterizing this area, is examined.

## MATERIALS

Fig.1 shows the locations of CTD stations used in this analysis. These data were acquired by salmon research vessels *Wakatake Maru* and *Hokko Maru*. A Map of SST anomalies (Fig.2) is quoted from "Monthly Ocean Report" issued by Japan Meteorological Agency.

## RESULTS

### 1. Western Subarctic Water

Fig. 3 shows temperature and salinity sections along line 1 through 4.

Low saline water was seen in the surface around 51°N of line 2 (Fig.3c), affected by the Alaska Current. The WSW, that has temperature less than 3°C, existed in depth 150-200m from 48°N to 50°N. Area of WSW in the section was smaller than 1995. Salinity of WSW was 33.4-33.6, slightly larger than 1995. This WSW was seen on line 3 and 4 around depth 100m. The south boundary of WSW on line 4 was 47°N, almost same latitude as 1995.

## 2. Sea Surface Temperature

Fig. 2 shows the SST anomalies in the July of 1996. Anomalies are calculated using the monthly mean values from 1961 to 1990. Negative anomalies prevailed south of 45°N, more than 1°C observed around 43°N, 155°W. Positive covered north of 45°N, and more than 1°C observed between 47°N and 53°N from 150°E to 160°E.

## REFERENCES

- Japan Meteorological Agency (1996): Monthly Ocean Report, No.30-31.  
Kawasaki, K. (1996): Outline of oceanographic conditions in the  
Northwestern Pacific during the summer of 1995. Salmon Report Series,  
41, 55-62.

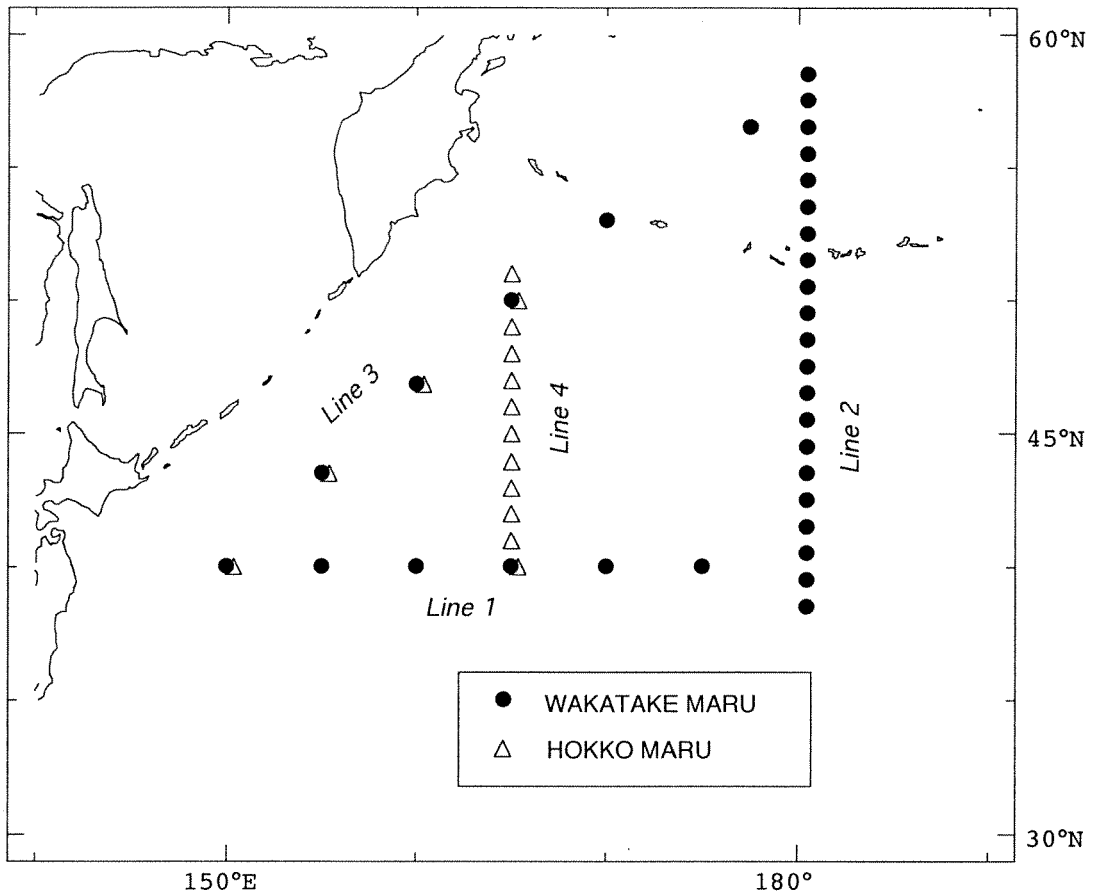


Fig.1 CTD Stations.

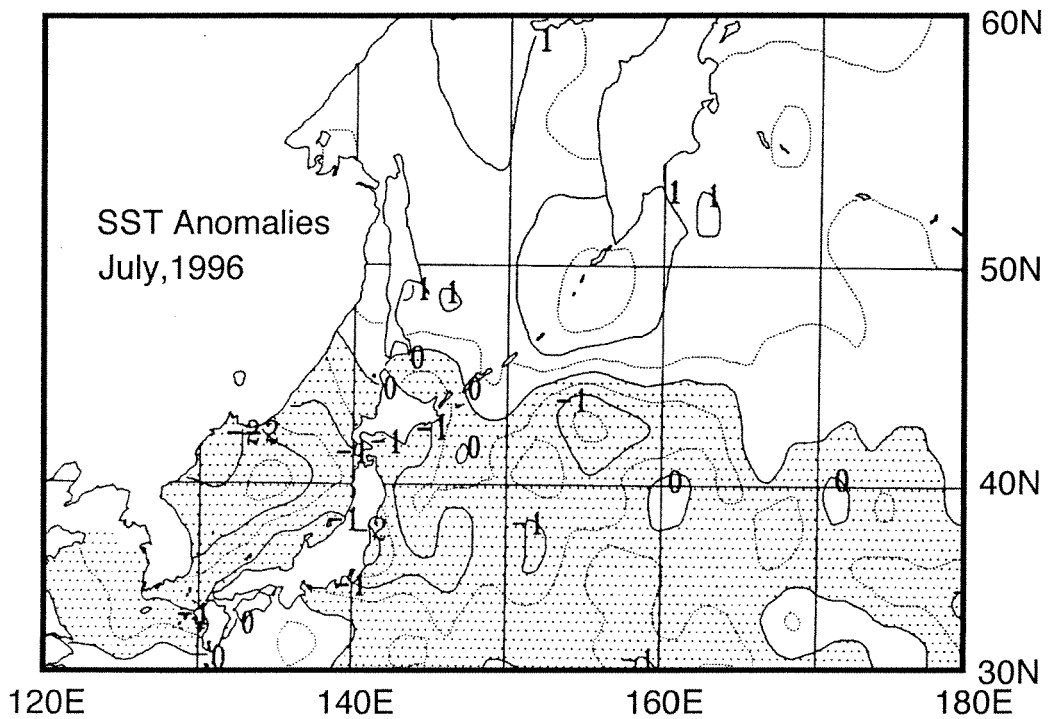
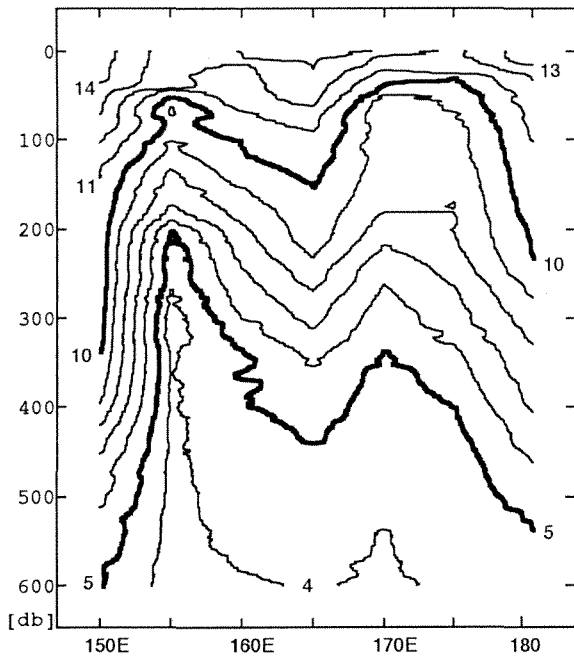
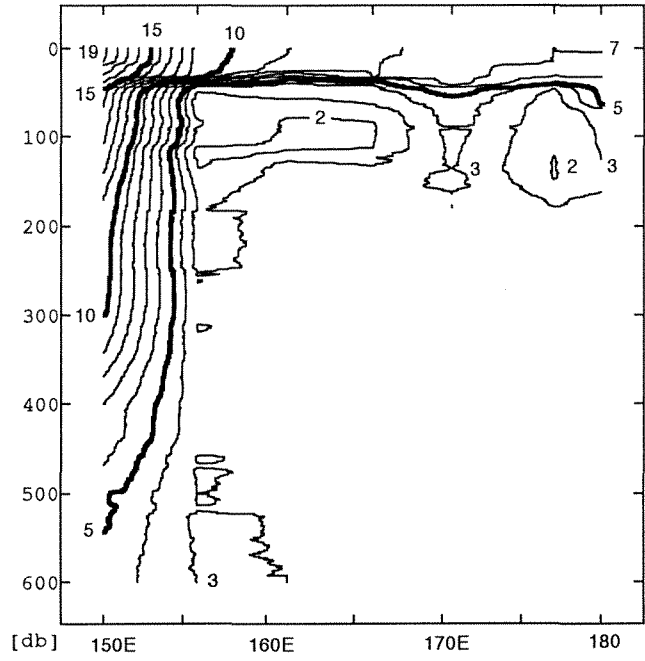


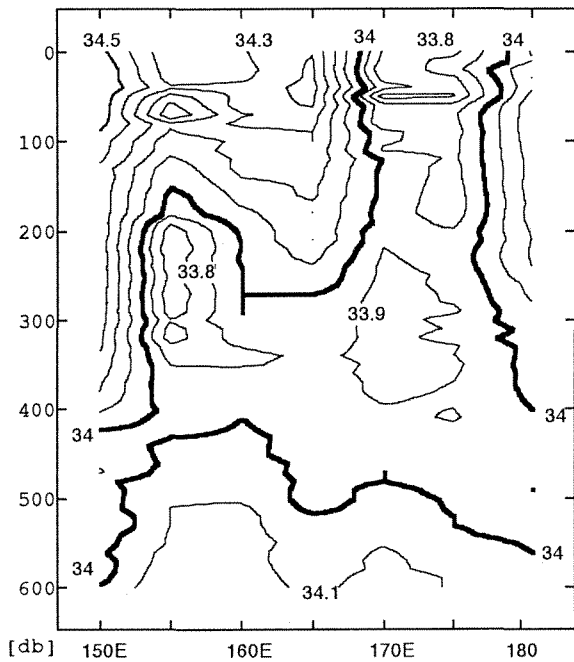
Fig.2 SST anomalies from monthly mean ( 1961-1990 ) in July 1996.  
 Shaded shows negative. ( Quoted from Monthly Ocean Report. )



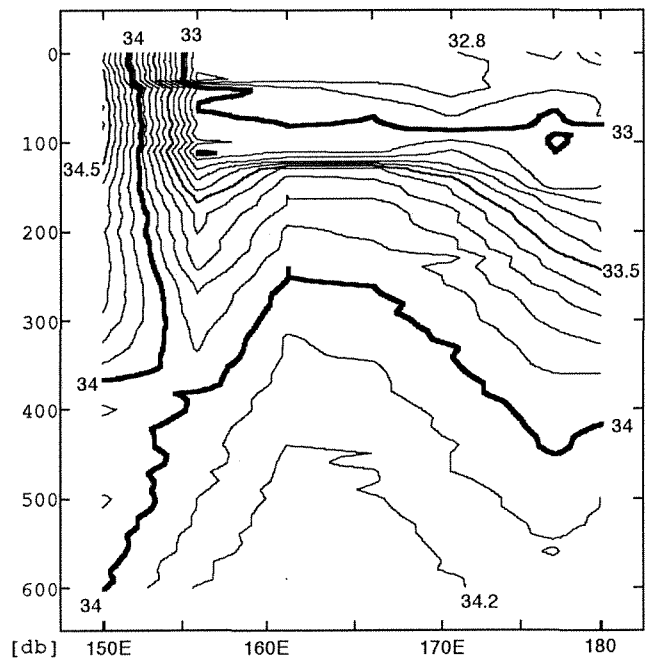
(a) Line 1, Temperature



(b) Line 3, Temperature

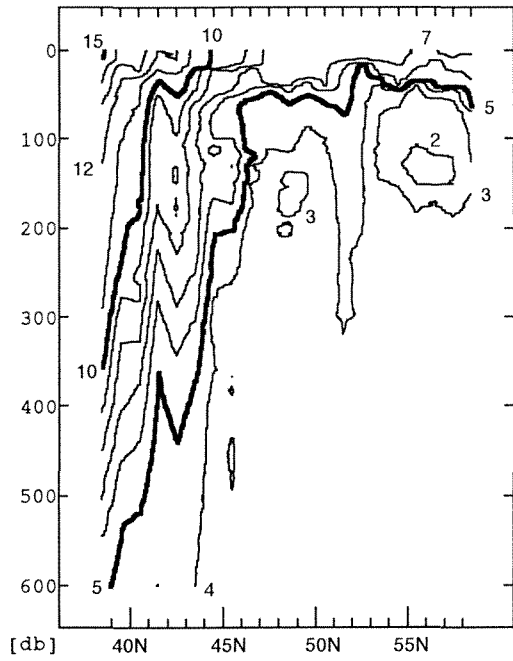


(a) Line 1, Salinity

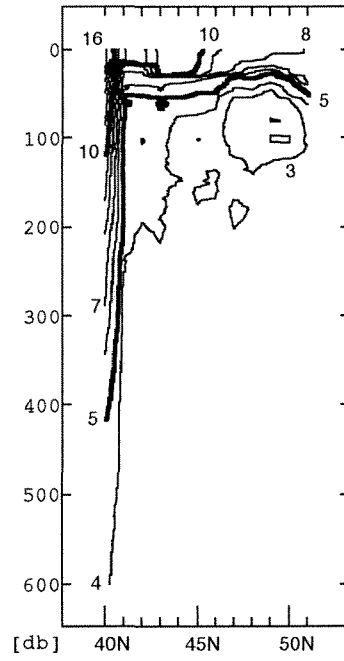


(b) Line 3, Salinity

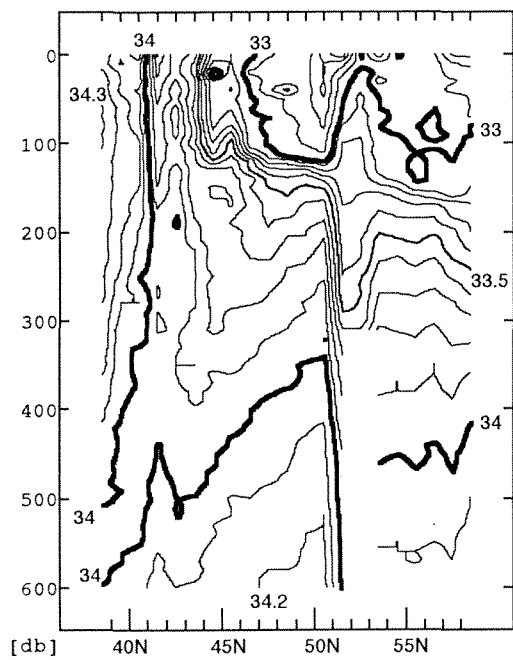
Fig. 3 Temperature and salinity sections along line 1 to line 4.  
Contour interval of temperature is 1 degree, salinity is 0.1 psu.



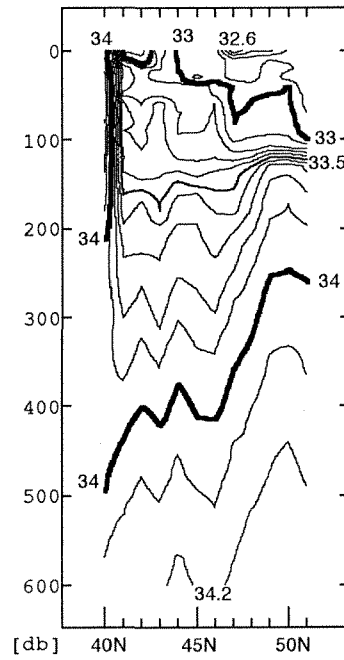
(c) Line 2, Temperature



(d) Line 4, Temperature



(c) Line 2, Salinity



(d) Line 4, Salinity

Fig. 3 Continued.