

**Proposed Cruise Plans of Japanese Research Vessels for
Salmon in the North Pacific Ocean in 2007**

by

Toru Nagasawa, Masa-aki Fukuwaka, Kentaro Morita and Tomonori Azumaya

**Hokkaido National Fisheries Research Institute, Fisheries Research Agency
116 Katsurakoi, Kushiro 085-0802
Japan**

Submitted to the

NORTH PACIFIC ANADROMOUS FISH COMMISSION

**by
JAPAN**

October 2006

THIS PAPER MAY BE CITED IN THE FOLLOWING MANNER:

Nagasawa, T., M. Fukuwaka, K. Morita, and T. Azumaya. 2006. Proposed cruise plans of Japanese research vessels for salmon in the North Pacific Ocean in 2007. (NPAFC Doc. 969 Rev.1) 4 p. Hokkaido National Fisheries Research Institute, Fisheries Research Agency, 116 Katsurakoi, Kushiro 085-0802, Japan.

Four Japanese salmon research vessels are tentatively scheduled to conduct the following scientific research in the North Pacific and the Bering Sea in 2007 (Table 1). In case of gillnet operation, gillnets less than 2.5 km in length at sea will be used.

(1) The *Hokko maru* will conduct research with a surface or midwater trawl to obtain information on the distribution, abundance and some biological characteristic of summering salmon in the North Pacific and Bering Sea from late June to mid August (Fig. 1).

(2) The *Oshoro maru* will conduct research with gillnets, longline and hook and line to obtain data on the distribution and ecology of salmon and other pelagic fishes in the western North Pacific in May (Fig. 2), and in the western North Pacific, eastern Bering Sea and Chukchi Sea from early July to late August (Fig. 3).

(3) The *Wakatake maru* will conduct research with gillnets and longlines to obtain data on the distribution and abundance of salmon along 180° longitude in the central North Pacific and Bering Sea from early June to late July (Fig. 4).

(4) The *Kaiun maru* will conduct research with gillnets to obtain data on the distribution and ecology of neon flying squid, salmon and other pelagic fishes in the western and central North Pacific Ocean from early July to early August (Fig. 5).

Table 1. Proposed cruise plan of Japanese research vessels for salmon in the North Pacific in 2007

Vessel	Period	Survey area	Research objects	Gear equipped
<i>Hokko maru</i>	June 25-Aug 10	North Pacific Bering Sea	Abundance Distribution	Mid water trawl hook and line
<i>Oshoro maru</i>	May 8-May21	Western North Pacific	Fish community	Gillnets, longline
	July 1 – Aug 29	North Pacific, Bering Sea Chukchi Sea	Fish community	Gillnets, longline, and hook and line
<i>Wakatake maru</i>	June 6 - July 19	Central North Pacific, Bering Sea	Stock assessment	Gillnets and longline
<i>Kaiun maru</i>	July 5 – Aug 7	Central and western North Pacific	Stock assessment	Gillnets

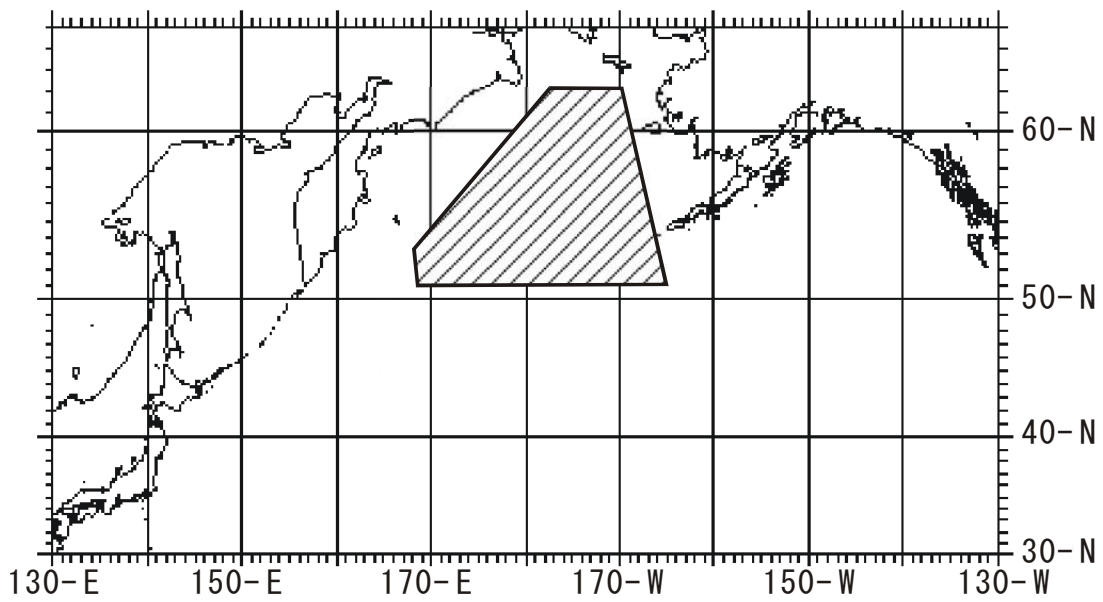


Fig. 1. Cruises plan of the *Hokko maru* in the North Pacific (excluding Russian 200 nm zone). June 25 (Kushiro) – August 11 (Kushiro).

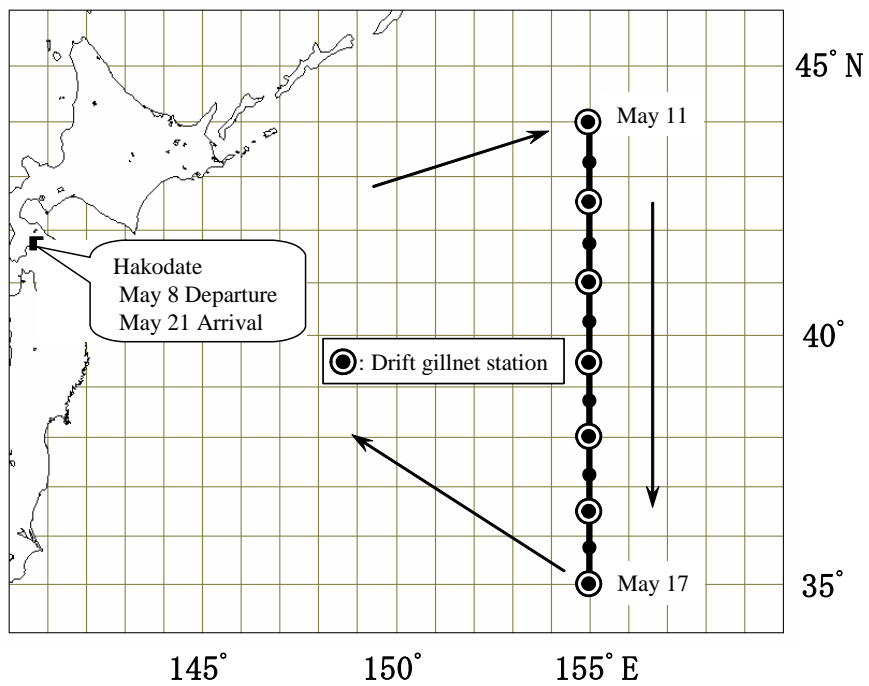


Fig. 2. Cruise plan of the *Oshoro maru* in the western North Pacific. May 8 (Hakodate) – May 21 (Hakodate).

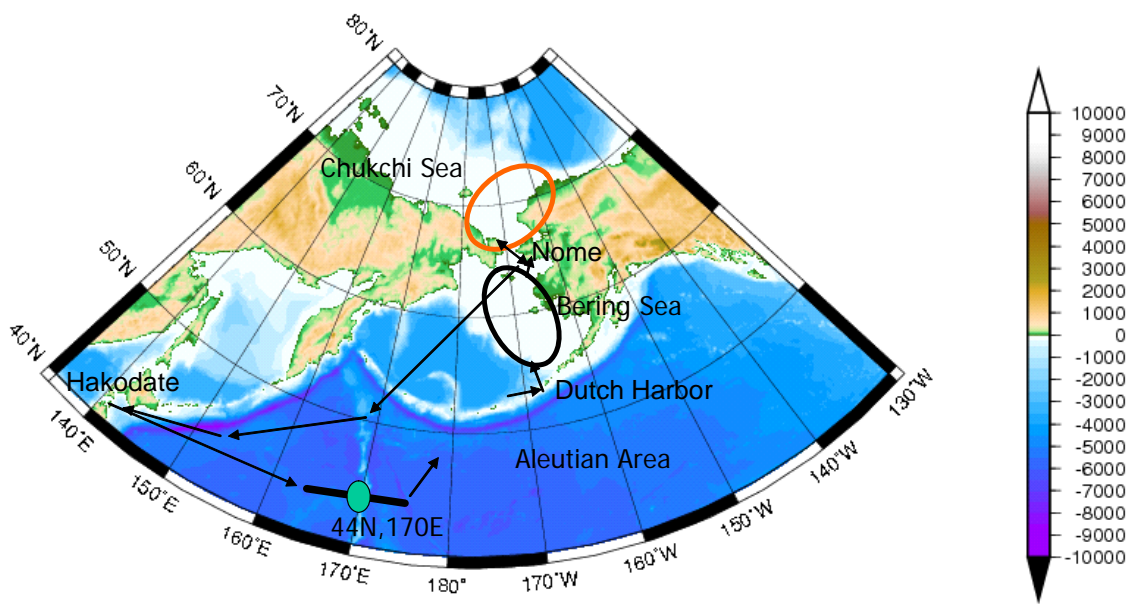


Fig. 3. Cruise plan of the *Oshoro maru*, July 1 (Hakodate) – August 29 (Hakodate) .

Solid line at 44N shows gillnets, longline and hook&line operation area, and ovals show longline and hook&line operation areas (excluding Russian 200 nm zone) .

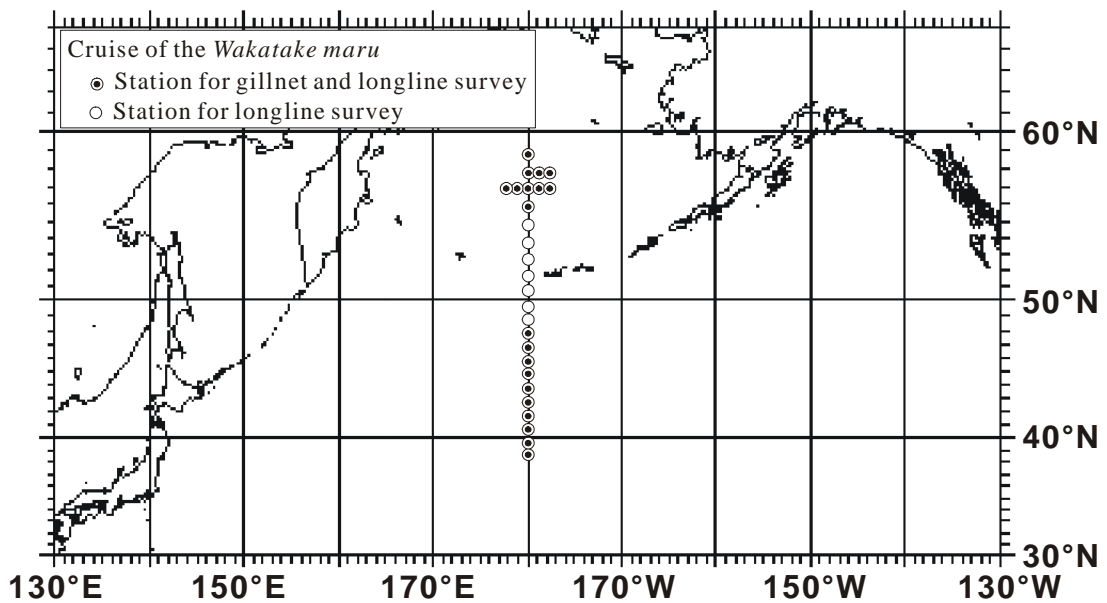


Fig. 4. Cruise of the *Wakatake maru*. June 6 (Kushiro) - July 19 (Kushiro).

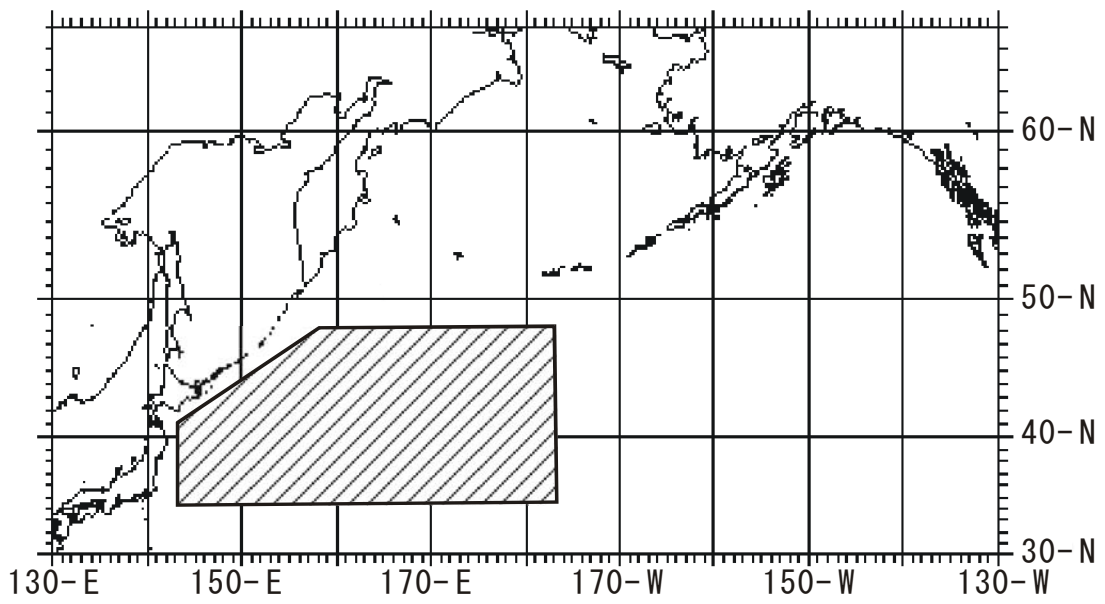


Fig. 5. Cruise of the *Kaiun maru* (excluding Russian 200 nm zone). July 5 (Hachinohe) – August 7 (Hachinohe).